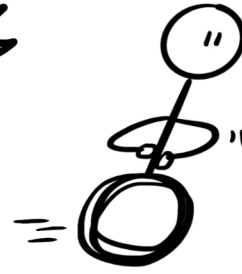


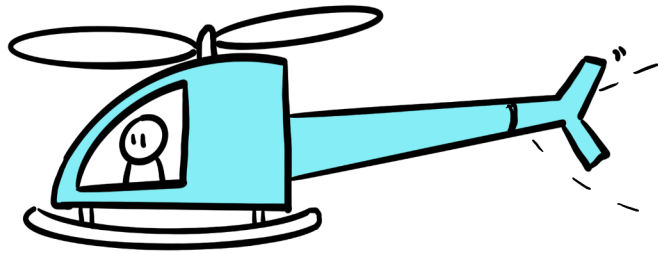


# AGILE AGE



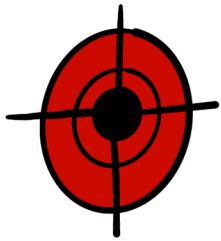
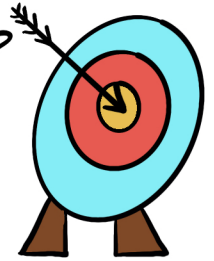
A WORLD THAT IS SIGNIFICANTLY MORE COMPLEX AND UNPREDICTABLE

THE ABILITY TO REACT AND ADAPT QUICKLY IS CRITICAL TO SURVIVAL

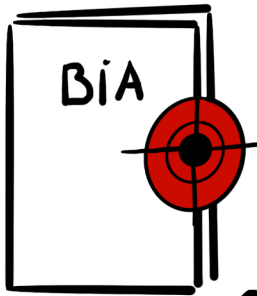


## A NEW APPROACH FOR BCM; ADAPTIVE BUSINESS CONTINUITY

AN APPROACH TO CONTINUOUSLY IMPROVE AN ORGANIZATION'S RECOVERY CAPABILITIES, WITH A FOCUS ON THE CONTINUED DELIVERY OF SERVICES FOLLOWING AN UNEXPECTED UNAVAILABILITY OF PEOPLE AND/OR RESOURCES

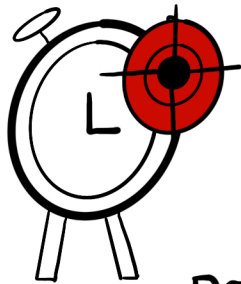


### ELIMINATE THESE PRACTICES FOR A NEW APPROACH



ELIMINATE THE BUSINESS IMPACT ANALYSIS:  
=> TOO MUCH EFFORT FOR TOO LITTLE VALUE  
=> BECOMES OUTDATED QUICKLY  
=> CONTAINS SIGNIFICANT FLAWS

#### OMIT THE BIA



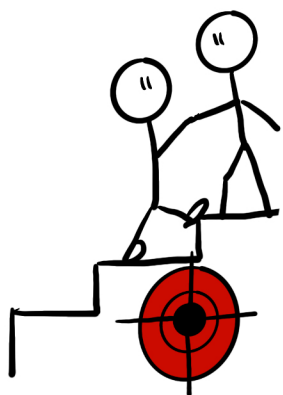
ELIMINATE RECOVERY TIME TARGETS:  
=> THEY SET THE WRONG TONE  
=> EMBODY SIGNIFICANT FLAWS  
=> REQUIRE INACCESSIBLE INFORMATION  
=> CREATE RISK THROUGH FAULTY ESTIMATES

#### DO NOT SET TIME TARGETS



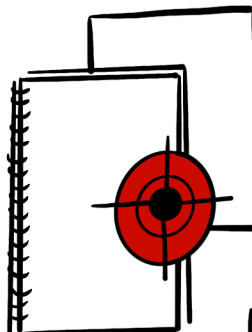
ELIMINATE THE RISK ASSESMENT:  
=> RM MAY NOT KEEP PACE WITH GLOBAL COMPLEXITIES  
=> TAKES TIME AWAY FROM VALUABLE BUSINESS CONTINUITY TASKS  
=> RM BELONGS TO AN ENTIRELY DIFFERENT DISCIPLINE  
=> RM - PREVENTING LOSS / BC - IMPROVING RECOVERABILITY FROM LOSS

#### LEAVE OUT THE RISK ASSESSMENT



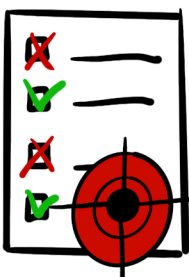
ELIMINATE EXECUTIVE SUPPORT:  
=> ADDS UNNECESSARY REDUNDANCY AND RISK  
=> IT IS NOT REQUIRED FOR SUCCESS  
=> IT DOES NOT MEET EXECUTIVES' PRIORITEIT FOR ACTION  
=> EXPLICIT EXECUTIVE SUPPORT IS NOT REQUIRED IN OTHER PROFESSIONS

#### OBTAIN ONLY THE EXECUTIVE SUPPORT YOU NEED



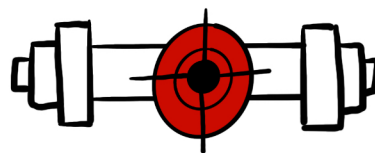
ELIMINATE REQUIREMENTS TO DOCUMENT THE PLAN:  
=> DOCUMENTED PLANS GROW TOO LONG AND DETAILED  
=> DOCUMENTED PLANS ARE A POOR FIT FOR THE TASK  
=> DOCUMENTED PLANS DISTRACT FROM REAL PURPOSE  
=> DOCUMENTED PLANS GROW INCREASINGLY USELESS WITH TIME

#### USE DASHBOARDS NOT DOCUMENTS



ELIMINATE REQUIREMENTS TO TEST THE PROCESS:  
=> TESTING REINFORCES THE CONCEPT OF TIME AS AN OBJECTIVE AND PLANS AS SCRIPTS  
=> TESTING WASTES OPPORTUNITIES TO MAKE MEANINGFUL IMPROVEMENT  
=> TESTING DRIVES PARTICIPANTS TO MEET THE OBJECTIVE, NOT TO IMPROVE RECOVERABILITY

#### EXERCISE INSTEAD OF TEST



ELIMINATE STANDALONE TRAINING AND AWARENESS:  
=> TRADITIONAL TRAINING AND AWARENESS OCCUR TOO LATE IN THE PROCES  
=> TRADITIONAL TRAINING AND AWARENESS BELONG TO A SEPARATE DISCIPLINE  
=> TRADITIONAL TRAINING AND AWARENESS POSE A SIGNIFICANT CHALLENGE TO MEASURING THE BENEFITS

#### INTEGRATE TRAINING AND AWARENESS